



Monet[®]

The Art of Hydration™



DMI

Water & Ice

120 | 10

Enjoy 120 lbs. of Chewable Nugget Ice per day with a 10 lb. Ice Storage Bin

Ice for Everyone

Our DMI model offers chewable nugget ice alongside filtered hot and ambient water in a cooler-sized format, so you can enjoy soft, chewable ice without having to install a clunky commercial ice machine.

Designed with You in Mind

At Monet Water and Ice we believe that personal hydration products should reflect the people that use them, and the beauty, efficiency, and ease of use we all desire.

A Better Way to Hydrate

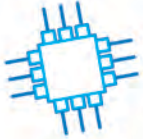
Monet's bottleless dispensers provide greater hygiene and increased sustainability compared to bottled options. The latest filtration and LED UV technologies provide a continuous supply of clean fresh tasting water without the need for bulky 5-gallon or plastic single-use bottles.

monetcoolers.com

The Art of Hydration™



Effortless
Capacitive touch icons offer intuitive effortless dispensing.



Advanced
Internal microprocessor controls and monitors system functions.



Smart
LCD Smart screen displays messages, system status, and service alerts.



Accommodating
Extra-large 12-inch dispense area makes refilling even the largest containers a breeze.



Refreshing
Advanced reverse osmosis and multi-stage carbon filtration deliver a continuous supply of fresh, clean drinking water and ice.



Clean
In-tank LED UV technology, anti-microbial surfaces, and no-touch filter changes keep the system clean inside and out.

120

10

120 lbs. of Chewable Nugget Ice per day with 10 lbs. of Ice Storage.

DMI 
Water & Ice
monetcoolers.com



Shown with optional 8.5" riser.



The Art of Hydration™

Monet Water & Ice DMI Model Specifications



Model	DMI-R	
Power		
Voltage (V)	115Vac/60Hz	
Power Consumption	500W	
Compressor Power Consumption	200W	
Hot Power Consumption	300W	
Hot Water System		
Temperature Control	Thermistor	
Thermistor Cycle	Step 1: 158 - 165°F, Step 2: 171 - 176°F, Step 3: 178 - 183°F, Step 4: 185 - 194°F	
Hot Thermostat / Heat Limiter	Bi-metal (95°c +/- 1°c)	
Hot Tank Size	0.79 gal (3 Liters)	
Ice Making System		
Ice Production Capacity (24 hrs.)	Room Temp. : 68°F (20°C)	120 lbs (55Kg)
	Water Temp. : 59°F (15°C)	
	Room Temp. : 86°F (30°C)	88 lbs (40Kg)
	Water Temp. : 77°F (25°C)	
Ice Bin Capacity	10 lbs (4.6 Kg)	
Water Reservoir Capacity	1.7 gal (6.5 Liters)	
Feature		
Safety Hot	2-Step Access	
Key Access	Capacitive Touch Key	
Display	LCD Module	
Filter System	4 stage RO-80GPD	
Sterilization	UV LED	
Color	Black	
Installation Conditions		
Ambient Temperature	50°F ~ 95°F (10°C ~ 35°C)	
Water Temperature	50°F ~ 86°F (10°C ~ 30°C)	
Water Pressure	20 ~ 85 psi (2 ~ 6 Kg/cm ²)	
Weights and Measurements		
Net Weight	94.8 lbs (43Kg)	
Gross Weight	101.4 lbs (46Kg)	
Dimensions WxDxH	13.0" × 19.7" × 49.2" (330mm x 500mm x 1250mm)	